

VLIER VLIER VLIER VLIER VLIER VLIER VLIER VLIER VLIER VLIER VLIER VLIER



METRIC

Spring Loaded Device Catalog Supplement

- PUSH-FIT BALL
- DOUBLE END BALL
- POSI-HEX BALL & STUBBY
- STANDARD & LONG TRAVEL

WWW.VLIER.COM

...proud to be an ISO 9001 and QS-9000 manufacture

VLIER VLIER VLIER VLIER VLIER VLIER VLIER VLIER VLIER VLIER VLIER VLIER



Catalog Content

NEW PRODUCTS	PAGE	2
STANDARD PLUNGERS		3
STUBBY PLUNGERS		4
POSI-HEX STUBBY PLUNGERS		5
BALL PLUNGERS		6
POSI-HEX BALL PLUNGERS		7
PUSH-FIT PLUNGERS		8 & 9
LONG TRAVEL PLUNGERS		10 & 11
INSTALLATION TOOLS		12

VLIER VLIER VLIER VLIER VLIER VLIER VLIER VLIER VLIER VLIER VLIER VLIER

	PHONE	
ENGINEERING SUPPORT	1-800-821-1090	WWW.VLIER.COM
LOCAL SUPPORT	FAX	CUSTOMER SUPPORT
	1-800-457-2020	

EXPERIENCE THE POWER OF VLIER



1943-2003



BARRY CONTROLS



NEW PRODUCTS



Posi-Hex Ball Plungers



Serrated Toggles



High Value Series Levelers

A new low cost option for a premium product



VLIER VLIER VLIER VLIER VLIER VLIER VLIER VLIER VLIER VLIER VLIER VLIER

Check out latest information about our new Products at our web-site www.vlier.com

- Quick turn Specials
- Enhanced Springs
- Leveling Devices
- Mechanical Components

EXPERIENCE THE POWER OF VLIER



1943-2003

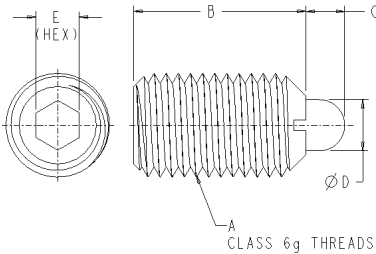
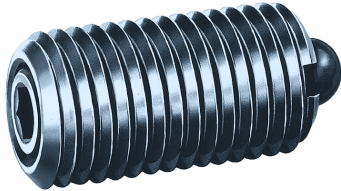


BARRY CONTROLS



Standard Plunger

Spec - Sheet



Steel	Steel w/Delrin Plunger	Stainless Steel	Stainless Steel w/ Delrin Plunger	End Force, N (Lbs)		A Thread 6g-ISO	B mm (in.)	C mm (in.)	ØD mm (in.)	E mm (in.)
				Initial	Final					
HPSM3	N/A	N/A	N/A	2,0 (.45)	4,0 (.9)	M3	12 (.472)	1,0 (.039)	1,0 (.039)	0,7 (.028)
HPSM4	HDPSM4	HSPSM4	HSDPSM4	4,5 (1.01)	16 (3.6)	M4	15,0 (.591)	1,5 (.059)	1,5 (.059)	1,3 (.051)
HPSM5	HDPSM5	HSPSM5	HSDPSM5	6 (1.35)	19 (4.27)	M5	18 (.709)	2,3 (.091)	2,4 (.094)	1,5 (.059)
HPSMH5	N/A	N/A	N/A	11 (2.47)	40,0 (8.99)	M5	18 (.709)	2,3 (.091)	2,4 (.094)	1,5 (.059)
HPSM6	HDPSM6	HSPSM6	HSDPSM6	6 (1.35)	19 (4.27)	M6	20,0 (.787)	2,5 (.098)	2,7 (.61)	2,0 (.079)
HPSMH6	N/A	N/A	N/A	15,0 (3.37)	43 (9.67)	M6	20,0 (.787)	2,5 (.098)	2,7 (.61)	2,0 (.079)
HPSM8	HDPSM8	HSPSM8	HSDPSM8	10,0 (2.25)	39 (8.77)	M8	22 (.866)	3,0 (.118)	3,5 (.138)	2,5 (.098)
HPSMH8	N/A	N/A	N/A	20 (4.5)	75,0 (16.86)	M8	22 (.866)	3,0 (.118)	3,5 (.138)	2,5 (.098)
HPSM10	HDPSM10	HSPSM10	HSDPSM10	10,0 (2.25)	39 (8.77)	M10	22 (.866)	3,0 (.118)	4,0 (.157)	3,0 (.118)
HPSMH10	N/A	N/A	N/A	20 (4.5)	75,0 (16.86)	M10	22 (.866)	3,0 (.118)	4,0 (.157)	3,0 (.118)
HPSM12	HDPSM12	HSPSM12	HSDPSM12	12 (2.7)	53,0 (11.91)	M12	28 (1.102)	4,0 (.157)	6,0 (.236)	4,0 (.157)
HPSMH12	N/A	N/A	N/A	45 (10.12)	120,0 (26.98)	M12	28 (1.102)	4,0 (.157)	6,0 (.236)	4,0 (.157)
HPSM16	HDPSM16	HSPSM16	HSDPSM16	45 (10.12)	100 (22.48)	M16	32 (1.26)	5,0 (.197)	7,5 (.295)	5,0 (.197)
HPSMH16	N/A	N/A	N/A	64,0 (14.39)	160,0 (35.97)	M16	32 (1.26)	5,0 (.197)	7,5 (.295)	5,0 (.197)
HPSM20	N/A	HSPSM20	N/A	52 (11.69)	125 (28.1)	M20	40 (1.575)	7,0 (.276)	10,0 (.393)	6,0 (.236)
HPSMH20	N/A	N/A	N/A	75,0 (16.86)	195,0 (43.84)	M20	40 (1.575)	7,0 (.276)	10,0 (.393)	6,0 (.236)
HPSM24	N/A	N/A	N/A	70 (15.74)	170,0 (38.22)	M24	52 (2.047)	10,0 (.393)	12,0 (.472)	8,0 (.315)

VLIER VLIER VLIER VLIER VLIER VLIER VLIER VLIER VLIER VLIER VLIER

FEATURES

- Standard full travel
- Accurate, repeatable end force
- Slotted plunger body for blind whole install
- Choices of steel, stainless steel and delrin
- Choices of spring forces
- Accurate alignment

EXPERIENCE THE POWER OF VLIER



1943-2003

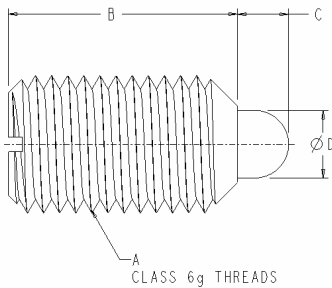


BARRY CONTROLS



Stubby Plunger

Spec - Sheet



Steel Part Number	Stainless Steel Part Number	Initial	Final	A Thread 6g-ISO	B mm (in.)	C mm (in.)	ØD mm (in.)
HMM4	HSMM4	4,5 (1.01)	12,5 (2.81)	M4	9 (.354)	1,5 (.059)	1,8 (.071)
HMM5	HSMM5	5 (1.12)	13 (2.92)	M5	12 (.472)	2,0 (.079)	2,4 (.094)
HMM6	HSMM6	6 (1.35)	17 (3.82)	M6	14 (.551)	2,0 (.079)	2,7 (.106)
HMMH6	HSMMH6	11 (2.47)	25 (5.62)	M6	14 (.551)	2,0 (.079)	2,7 (.106)
HMM8	HSMM8	16 (3.6)	33 (7.42)	M8	16 (.63)	2,0 (.079)	3,8 (.15)
HMMH8	HSMMH8	23 (5.17)	59 (13.26)	M8	16 (.63)	2,0 (.079)	3,8 (.15)
HMM10	HSMM10	19 (4.27)	42 (9.44)	M10	19 (.748)	2,5 (.098)	4,5 (.177)
HMMH10	HSMMH10	20 (4.5)	54 (12.14)	M10	19 (.748)	2,5 (.098)	4,5 (.177)
HMM12	HSMM12	22 (4.95)	57 (12.81)	M12	22 (.866)	3,5 (.138)	6,2 (.244)
HMMH12	HSMMH12	38 (8.54)	96 (21.58)	M12	22 (.866)	3,5 (.138)	6,2 (.244)
HMM16	HSMM16	38 (8.54)	78 (17.54)	M16	24 (.945)	4,5 (.177)	8,5 (.335)
HMMH16	HSMMH16	50 (11.24)	100 (22.48)	M16	24 (.945)	4,5 (.177)	8,5 (.335)
HMM20	HSMM20	39 (8.77)	81 (18.21)	M20	30 (1.181)	6,5 (.256)	10,0 (.394)
HMMH20	HSMMH20	52 (11.69)	133 (29.9)	M20	30 (1.181)	6,5 (.256)	10,0 (.394)
HMM24	HSMM24	72 (16.19)	155 (34.85)	M24	34 (1.339)	8,0 (.315)	13,0 (.512)
HMMH24	HSMMH24	91 (20.46)	223 (50.13)	M24	34 (1.339)	8,0 (.315)	13,0 (.512)

VLIER VLIER VLIER VLIER VLIER VLIER VLIER VLIER VLIER VLIER VLIER

FEATURES

- Compact size with maximum travel
- Accurate, repeatable end force
- Slotted screwdriver installation
- Choices of steel stainless steel
- Choices of spring forces
- Allows some sideloading

EXPERIENCE THE POWER OF VLIER



1943-2003

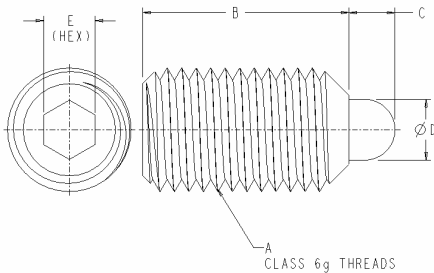


BARRY CONTROLS



Posi-Hex Stubby Plunger

Spec - Sheet



Steel	Stainless Steel			A	B	C	ØD	E
Part Number	Part Number	Initial	Final	Thread 6g-ISO	mm (in.)	mm (in.)	mm (in.)	mm (in.)
HPMM4	HSPMM4	4,5 (1.01)	12,5 (2.81)	M4	12 (.472)	1,5 (.059)	1,8 (.071)	2 (.079)
HPMM5	HSPMM5	5 (1.12)	13 (2.92)	M5	14 (.551)	2 (.079)	2,4 (.094)	2,5 (.098)
HPMM6	HSPMM6	6 (1.35)	17 (3.82)	M6	15,0 (.591)	2,0 (.079)	2,7 (.61)	3 (.118)
HPMMH6	HSPMMH6	11 (2.47)	25 (5.62)	M6	15,0 (.591)	2,0 (.079)	2,7 (.61)	3 (.118)
HPMM8	HSPMM8	16 (3.6)	33 (7.42)	M8	18 (.709)	2,0 (.079)	3,8 (.15)	4 (.157)
HPMMH8	HSPMMH8	23 (5.17)	59 (13.26)	M8	18 (.709)	2,0 (.079)	3,8 (.15)	4 (.157)
HPMM10	HSPMM10	19 (4.27)	42 (9.44)	M10	23 (.906)	2,5 (.098)	4,5 (.177)	5 (.197)
HPMMH10	HSPMMH10	20 (4.5)	54 (12.14)	M10	23 (.906)	2,5 (.098)	4,5 (.177)	5 (.197)
HPMM12	HSPMM12	22 (4.95)	57 (12.81)	M12	26 (1.024)	3,5 (.138)	6,2 (.244)	6 (.236)
HPMMH12	HSPMMH12	38 (8.54)	96 (21.58)	M12	26 (1.024)	3,5 (.138)	6,2 (.244)	6 (.236)
HPMM16	HSPMM16	38 (8.54)	78 (17.54)	M16	33 (1.299)	4,5 (.177)	8,5 (.335)	8,0 (.315)
HPMMH16	HSPMMH16	50 (11.24)	100 (22.48)	M16	33 (1.299)	4,5 (.177)	8,5 (.335)	8,0 (.315)
HPMM20	HSPMM20	39 (8.77)	81 (18.21)	M20	43 (1.69)	6,5 (.256)	10 (.393)	10 (.393)
HPMMN20	HSPMMH20	52 (11.69)	133 (29.9)	M20	43 (1.69)	6,5 (.256)	10 (.393)	10 (.393)
HPMM24	HSPMM24	72 (16.19)	155 (34.85)	M24	48 (1.89)	8,0 (.315)	13 (.512)	12 (.472)
HPMMH24	HSPMMH24	91 (20.46)	223 (50.13)	M24	48 (1.89)	8,0 (.315)	13 (.512)	12 (.472)

VLIER VLIER VLIER VLIER VLIER VLIER VLIER VLIER VLIER VLIER VLIER

FEATURES

- Compact Size
- Easy installation & removal using a hex wrench
- Accurate repeatable end force
- Choices of steel stainless steel
- Choices of spring forces
- Allows some side loading

EXPERIENCE THE POWER OF VLIER



1943-2003

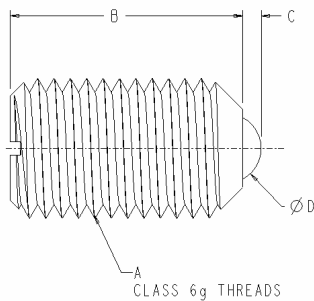


BARRY CONTROLS



Ball Plunger

Spec - Sheet



Steel Part Number	Stainless Steel Part Number	Initial	Final	A Thread 6g-ISO	B mm (in.)	C mm (in.)	ØD mm (in.)
HBM3	HSBM3	3 (.67)	4,5 (1.01)	M3	7 (.276)	0,4 (.016)	1,5 (.059)
HBM4	HSBM4	8,5 (1.91)	14 (3.15)	M4	9 (.354)	0,8 (.031)	2,5 (.098)
HBM5	HSBM5	8 (1.8)	14 (3.15)	M5	12 (.472)	0,9 (.035)	3,0 (.118)
HBMH5	HSBMH5	15,0 (3.37)	22 (4.95)	M5	12 (.472)	0,9 (.035)	3,0 (.118)
HBM6	HSBM6	11 (2.47)	18 (4.05)	M6	14 (.551)	1,0 (.039)	3,5 (.137)
HBMH6	HSBMH6	19,0 (4.27)	28 (6.29)	M6	14 (.551)	1,0 (.039)	3,5 (.137)
HBM8	HSBM8	18,0 (4.05)	31 (6.97)	M8	16 (.63)	1,5 (.059)	4,5 (.177)
HBMH8	HSBMH8	36,0 (8.09)	62 (13.94)	M8	16 (.63)	1,5 (.059)	4,5 (.177)
HBM10	HSBM10	24,0 (5.4)	45 (10.12)	M10	19 (.748)	2,0 (.079)	6,0 (.236)
HBMH10	HSBMH10	57,0 (12.81)	104 (23.38)	M10	19 (.748)	2,0 (.079)	6,0 (.236)
HBM12	HSBM12	26,0 (5.85)	49 (11.02)	M12	22 (.866)	2,5 (.098)	8,0 (.315)
HBMH12	HSBMH12	61,0 (13.71)	110 (24.73)	M12	22 (.866)	2,5 (.098)	8,0 (.315)
HBM16	HSBM16	41,0 (9.22)	86 (19.33)	M16	24 (.945)	3,5 (.138)	10,0 (.394)
HBMH16	HSBMH16	68 (15.29)	142 (31.92)	M16	24 (.945)	3,5 (.138)	10,0 (.394)
HBM20	HSBM20	56,0 (12.59)	111 (24.95)	M20	30 (1.181)	4,5 (.177)	12,0 (.472)
HBMH20	HSBMH20	84 (18.88)	166 (37.32)	M20	30 (1.181)	4,5 (.177)	12,0 (.472)
HBM24	HSBM24	81,0 (18.21)	151 (33.95)	M24	34 (1.339)	5,5 (.217)	15,0 (.591)
HBMH24	HSBMH24	127 (28.55)	237 (53.28)	M24	34 (1.339)	5,5 (.217)	15,0 (.591)

VLIER VLIER VLIER VLIER VLIER VLIER VLIER VLIER VLIER VLIER VLIER

FEATURES

- Compact Size
- Easy installation with Screw driver
- Allows side loading
- Choices of steel and stainless steel
- Choices of spring forces
- Impact resistance

EXPERIENCE THE POWER OF VLIER



1943-2003

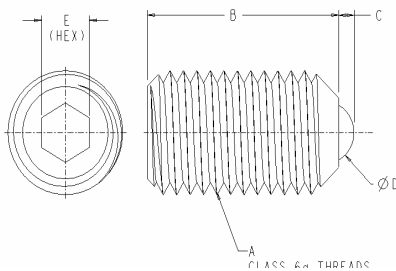
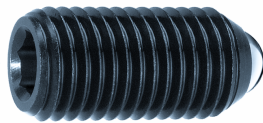


BARRY CONTROLS



Posi-Hex Ball Plunger

Spec - Sheet



Steel Part Number	Stainless Part Number	End Force, N (Lbs)		A Thread 6g-ISO	B mm (in.)	C mm (in.)	ØD mm (in.)	E mm (in.)
		Initial	Final					
HPM4	HSPM4	8,5 (1.91)	14 (3.15)	M4	12 (.472)	0,8 (.031)	2,5 (.098)	2 (.079)
HPM5	HSPM5	8 (1.8)	14 (3.15)	M5	14 (.551)	0,9 (.035)	3 (.118)	2,5 (.098)
		15,0 (3.37)	22 (4.95)					2,5 (.098)
HPM6	HSPM6	11 (2.47)	18 (4.05)	M6	15 (.591)	1,0 (.039)	3,5 (.138)	3 (.118)
		19,0 (4.27)	28 (6.29)					3 (.118)
HPM8	HSPM8	18,0 (4.05)	31 (6.97)	M8	18 (.709)	1,5 (.059)	4,5 (.177)	4 (.157)
		36,0 (8.09)	62 (13.94)					4 (.157)
HPM10	HSPM10	24,0 (5.4)	45 (10.12)	M10	23 (.906)	2,0 (.079)	6,0 (.236)	5 (.197)
		57,0 (12.81)	104 (23.38)					5 (.197)
HPM12	HSPM12	26,0 (5.85)	49 (11.02)	M12	26 (1.024)	2,5 (.098)	8,0 (.315)	6 (.236)
		61,0 (13.71)	110 (24.73)					6 (.236)
HPM16	HSPM16	41,0 (9.22)	86 (19.33)	M16	33 (1.299)	3,5 (.138)	10,0 (.394)	8,0 (.315)
		68 (15.29)	142 (31.92)					8,0 (.315)
HPM20	HSPM20	66,0 (14.84)	111 (24.95)	M20	43 (1.69)	4,5 (.177)	12,0 (.472)	10 (.393)
		84 (18.88)	166 (37.32)					10 (.393)
HPM24	HSPM24	81,0 (18.21)	151 (33.95)	M24	48 (1.89)	5,5 (.217)	15,0 (.591)	12 (.472)
		127 (28.55)	237 (53.28)					12 (.472)

VLIER VLIER VLIER VLIER VLIER VLIER VLIER VLIER VLIER VLIER VLIER

FEATURES

- Compact Size
- Easy installation & removal using a hex wrench
- Allows high side loading
- Choices of steel and stainless steel
- Choices of spring forces
- Impact resistance

EXPERIENCE THE POWER OF VLIER



1943-2003

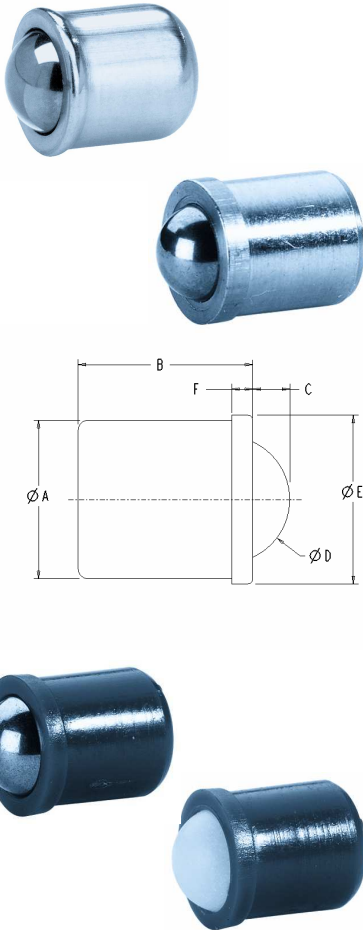


BARRY CONTROLS



Push-Fit Plungers

Spec - Sheet



SS Body with SS Ball	Brass Body with SS Ball	End Force, N (Lbs)			ØA	B	C	ØD	ØE	F, REF
		Initial		Final	+0,1 (+.004)	mm (in.)	mm (in.)	mm (in.)	mm (in.)	mm (in.)
HSPFB4	HBPFB4	2,5 (.56)		6,0 (1.35)	4,0 (.157)	5,0 (.197)	0,8 (.031)	3,0 (.118)	4,6 (.181)	0,9 (.035)
HSPFB5	HBPFB5	3,0 (.67)		6,5 (1.46)	5,0 (.197)	6,0 (.236)	1,0 (.039)	4,0 (.157)	5,6 (.220)	0,9 (.035)
HSPFB6	HBPFB6	5,5 (1.24)		11,5 (2.59)	6,0 (.236)	7,0 (.276)	1,6 (.062)	5,0 (.197)	6,5 (.256)	1,0 (.039)
HSPFB8	HBPFB8	7,0 (1.57)		12,5 (2.81)	8,0 (.315)	9,0 (.354)	1,9 (.075)	6,5 (.256)	8,5 (.335)	1,1 (.043)
HSPFB10	N/A	8,5 (1.91)		18,5 (4.16)	10,0 (.394)	13,5 (.531)	3,1 (.122)	8,5 (.335)	11,0 (.433)	1,9 (.075)
HSPFB12	N/A	12,0 (2.7)		26,5 (5.96)	12,0 (.472)	16,0 (.63)	3,8 (.15)	10,0 (.394)	13,0 (.512)	2,5 (.098)

Delrin Body with SS Ball	Delrin Body & Ball	End Force, N (Lbs)			ØA	B	C	ØD	ØE	F, REF
		Initial		Final	+0,1 (+.004)	mm (in.)	mm (in.)	mm (in.)	mm (in.)	mm (in.)
HDPFB4	HDDPFB4	2,5 (.56)		6,0 (1.35)	4,0 (.157)	5,0 (.197)	0,8 (.031)	3,0 (.118)	4,6 (.181)	0,9 (.035)
HDPFB5	HDDPFB5	3,0 (.67)		6,5 (1.46)	5,0 (.197)	6,0 (.236)	1,0 (.039)	4,0 (.157)	5,6 (.220)	0,9 (.035)
HDPFB6	HDDPFB6	5,5 (1.24)		11,5 (2.59)	6,0 (.236)	7,0 (.276)	1,6 (.062)	5,0 (.197)	6,5 (.256)	1,0 (.039)
HDPFB8	HDDPFB8	7,0 (1.57)		12,5 (2.81)	8,0 (.315)	9,0 (.354)	1,9 (.075)	6,5 (.256)	8,5 (.335)	1,1 (.043)
HDPFB10	HDDPFB10	8,5 (1.91)		18,5 (4.16)	10,0 (.394)	13,5 (.531)	3,1 (.122)	8,5 (.335)	11,0 (.433)	1,9 (.075)
HDPFB12	HDDPFB12	12,0 (2.7)		26,5 (5.96)	12,0 (.472)	16,0 (.63)	3,8 (.15)	10,0 (.394)	13,0 (.512)	2,5 (.098)

VLIER VLIER VLIER VLIER VLIER VLIER VLIER VLIER VLIER VLIER VLIER

FEATURE & BENEFITS

- Choice of Stainless Steel, Brass, or Delrin body
- Choice of Stainless Steel or Nylon ball
- Simple installation
- Decrease the number of purchased parts
- Minimize design time
- Body "lip" resists detent forces

EXPERIENCE THE POWER OF VLIER



1943-2003



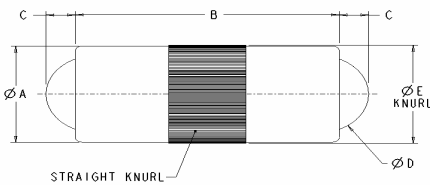
BARRY CONTROLS



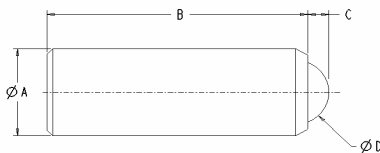
Push-Fit Plungers

Spec - Sheet

Double ended Plunger w/o collar



Single ended Plunger w/o collar



Part Number	Initial	Final	ØA mm (in.)	B mm (in.)	C mm (in.)	ØD mm (in.)	ØE mm +0,05/- 0.0 ()
HBPFD25	1,3 (.29)	2,5 (.56)	2,5 (.098)	5,3 (.209)	0,65 (.026)	2,0 (.079)	2,52 (.099)
HBPFD30	2,0 (.45)	4,5 (1.01)	3,0 (.118)	7,3 (.287)	0,80 (.315)	2,5 (.098)	3,02 (.119)
HBPFD40	2,5 (.562)	7,5 (.3)	4,0 (.157)	9,0 (.354)	0,90 (.035)	3,0 (.118)	4,03 (.169)
HBPFD50	3,5 (.79)	8,0 (1.8)	5,0 (.197)	10,8 (.425)	1,2 (.047)	4,0 (.157)	5,03 (.198)
HBPFD70	4,0 (.9)	12,0 (2.7)	7,0 (.276)	14,0 (.551)	2,00 (.079)	6,0 (.236)	7,03 (.277)
HBPFD80	6,0 (1.35)	15,0 (3.37)	8,0 (.315)	18,0 (.709)	2,10 (.083)	6,5 (.256)	8,03 (.316)

Part Number	Initial	Final	ØA mm ± 0,04 (in ± .002)	B mm (in.)	C mm (in.)	ØD mm (in.)
HSPFS30	4,5 (1.01)	7,5 (1.69)	3,0 (.118)	7,0 (.276)	0,65 (.026)	2,0 (.079)
HSPFS35	6,0 (1.35)	14,5 (3.26)	3,5 (.138)	9,0 (.354)	0,80 (.031)	2,5 (.098)
HSPFS40	8,0 (1.8)	14,0 (3.15)	4,0 (.157)	11,0 (.433)	0,90 (.035)	3,0 (.118)
HSPFS45	9,5 (2.14)	16,5 (3.71)	4,5 (.177)	12,0 (.472)	0,95 (.037)	3,2 (.125)
HSPFS50	11,0 (2.47)	18,0 (4.05)	5,0 (.197)	13,0 (.512)	1,00 (.039)	3,5 (.138)
HSPFS55	15,5 (3.48)	25,0 (5.62)	5,5 (.217)	14,0 (.551)	1,20 (.047)	4,0 (.157)
HSPFS60	18,0 (4.05)	31,0 (6.97)	6,0 (.236)	15,0 (.591)	1,50 (.059)	4,5 (.177)

VLIER VLIER VLIER VLIER VLIER VLIER VLIER VLIER VLIER VLIER VLIER

FEATURE & BENEFITS

- Choice of single or double ball action
- Brass body with stainless ball and spring
- Simple installation
- Decrease the number of purchased parts
- Minimize design time
- Smooth collar flange

EXPERIENCE THE POWER OF VLIER



1943-2003

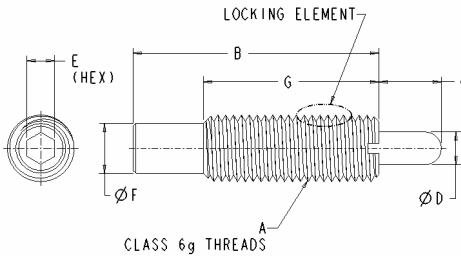
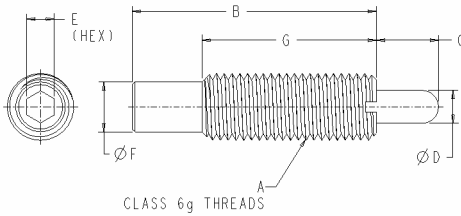


BARRY CONTROLS



Long Travel Plunger

Spec - Sheet



Steel W/O Locking element									
Part Number	Initial	Final	A Thread 6g-ISO	B mm (in.)	C mm (in.)	ØD mm (in.)	E mm (in.)	ØF mm (in.)	G mm (in.)
HTHL16A	17,0 (3.82)	74 (16.64)	M16	80 (3.15)	11 (.433)	7,3 (.287)	8 (.315)	13,4 (.528)	35 (1.378)
HTHL16B	21,0 (4.72)	81 (18.21)	M16	120 (4.724)	21 (.827)	7,3 (.287)	8 (.315)	13,4 (.528)	35 (1.378)
HTHL16C	21,0 (4.72)	89 (20.0)	M16	150 (5.91)	31 (1.22)	7,3 (.287)	8 (.315)	13,4 (.528)	35 (1.378)
HTHL16D	16,0 (3.6)	80 (17.98)	M16	200 (7.874)	41 (1.614)	7,3 (.287)	8 (.315)	13,4 (.528)	35 (1.378)
HTHL22A	80 (17.98)	214 (48.11)	M22	130 (5.118)	21 (.827)	9,0 (.354)	8 (.315)	19,0 (.748)	50 (1.97)
HTHL22B	70,0 (15.74)	210 (47.21)	M22	168 (6.614)	31 (1.22)	9,0 (.354)	8 (.315)	19,0 (.748)	50 (1.97)
HTHL22C	76,0 (17.09)	208 (46.76)	M22	226 (8.898)	41 (1.614)	9,0 (.354)	8 (.315)	19,0 (.748)	50 (1.97)
Steel With Locking Element									
Part Number	Initial	Final	A Thread 6g-ISO	B mm (in.)	C mm (in.)	ØD mm (in.)	E mm (in.)	ØF mm (in.)	G mm (in.)
HHL10	6,0 (1.35)	16 (3.6)	M10	35 (1.38)	8 (.315)	4,0 (.157)	3 (.118)	7,8 (.307)	25 (.984)
HHL12	4,0 (.90)	18 (4.05)	M12	43 (1.693)	10 (.394)	5,5 (.217)	4 (.157)	9,5 (.374)	35 (1.378)
HHLH12	7,0 (1.57)	46 (10.34)	M12	43 (1.693)	10 (.394)	5,5 (.217)	4 (.157)	9,5 (.374)	35 (1.378)
HHL16A	7,0 (1.57)	24 (5.4)	M16	48 (1.89)	10 (.394)	8,0 (.315)	6 (.236)	13,4 (.528)	35 (1.378)
HHLH16A	10,0 (2.25)	43 (9.67)	M16	48 (1.89)	10 (.394)	8,0 (.315)	6 (.236)	13,4 (.528)	35 (1.378)

VLIER VLIER VLIER VLIER VLIER VLIER VLIER VLIER VLIER VLIER VLIER

FEATURES

- Long standard travel
- Accurate, repeatable end force
- Slotted plunger body for blind whole install
- Choice of with or without locking element
- Choices of spring forces
- Impact resistance

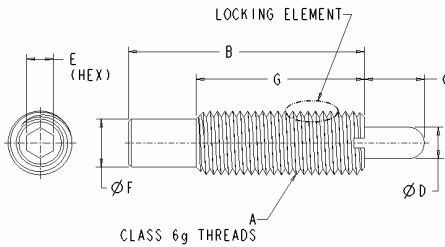
EXPERIENCE THE POWER OF VLIER





Long Travel Plunger

Spec - Sheet



Steel With Locking Element			A	B	C	ØD	E	ØF	G
Part Number	Initial	Final	Thread 6g-ISO	mm (in.)	mm (in.)	mm (in.)	mm (in.)	mm (in.)	mm (in.)
HHL16B	15,0 (3.37)	42 (9.44)	M16	58 (2.283)	10 (.394)	8,0 (.315)	6 (.236)	13,4 (.528)	35 (1.378)
HHLH16B	14,0 (3.15)	84 (18.88)	M16	58 (2.283)	10 (.394)	8,0 (.315)	6 (.236)	13,4 (.528)	35 (1.378)
HHL16C	9,0 (2.02)	33 (7.42)	M16	58 (2.283)	15 (.591)	8,0 (.315)	6 (.236)	13,4 (.528)	35 (1.378)
HHLH16C	10,0 (2.25)	57 (12.81)	M16	58 (2.283)	15 (.591)	8,0 (.315)	6 (.236)	13,4 (.528)	35 (1.378)
HHL16D	4,0 (.90)	23 (5.17)	M16	58 (2.283)	20 (.787)	8,0 (.315)	6 (.236)	13,4 (.528)	35 (1.378)
HHL16E	11,0 (2.47)	43 (9.67)	M16	83 (3.268)	20 (.787)	8,0 (.315)	6 (.236)	13,4 (.528)	35 (1.378)
HHLH16E	18,0 (4.05)	72 (16.19)	M16	83 (3.268)	20 (.787)	8,0 (.315)	6 (.236)	13,4 (.528)	35 (1.378)
HHL16F	13,0 (2.92)	41 (9.22)	M16	98 (3.858)	25 (.984)	8,0 (.315)	6 (.236)	13,4 (.528)	35 (1.378)
HHLH16F	20,0 (4.5)	70 (15.74)	M16	98 (3.858)	25 (.984)	8,0 (.315)	6 (.236)	13,4 (.528)	35 (1.378)
HHL16G	13,0 (2.92)	47 (10.57)	M16	98 (3.858)	30 (1.181)	8,0 (.315)	6 (.236)	13,4 (.528)	35 (1.378)
HHLH16G	20,0 (4.5)	80 (17.98)	M16	98 (3.858)	30 (1.181)	8,0 (.315)	6 (.236)	13,4 (.528)	35 (1.378)
HHL16H	24,0 (5.4)	110 (24.73)	M16	118 (4.646)	30 (1.181)	8,0 (.315)	6 (.236)	13,4 (.528)	35 (1.378)
HHL16K	13,0 (2.92)	63 (14.16)	M16	148 (5.827)	40 (1.575)	8,0 (.315)	6 (.236)	13,4 (.528)	35 (1.378)
HHLH16K	21,0 (4.72)	113 (25.4)	M16	148 (5.827)	40 (1.575)	8,0 (.315)	6 (.236)	13,4 (.528)	35 (1.378)
HHL16L	7,0 (1.57)	43 (9.67)	M16	148 (5.827)	50 (1.969)	8,0 (.315)	6 (.236)	13,4 (.528)	35 (1.378)
HHLH16L	13,0 (2.92)	75 (16.86)	M16	148 (5.827)	50 (1.969)	8,0 (.315)	6 (.236)	13,4 (.528)	35 (1.378)
HHL24	14,0 (3.15)	87 (19.56)	M24	60 (2.362)	15 (.591)	10,0 (.394)	8 (.315)	19,6 (.772)	45 (1.772)
HHLH24	24,0 (5.4)	192 (43.16)	M24	60 (2.362)	15 (.591)	10,0 (.394)	8 (.315)	19,6 (.772)	45 (1.772)

VLIER VLIER VLIER VLIER VLIER VLIER VLIER VLIER VLIER VLIER VLIER

FEATURES

- Long standard travel
- Accurate, repeatable end force
- Slotted plunger body for blind whole install
- Choices with or without locking element
- Choices of spring forces
- Impact resistance

EXPERIENCE THE POWER OF VLIER



1943-2003



BARRY CONTROLS



Wrenches

Wrench for Vlier Plungers HPM/ HDPM Series

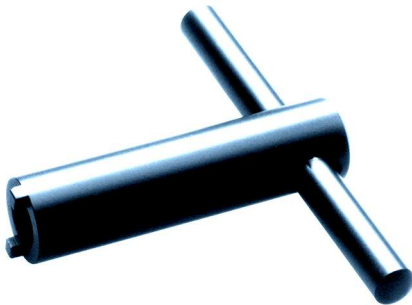
Spec - Sheet



PART NUMBER	For Thread Size
HMW3	M3
HMW4	M4
HMW5	M5
HMW6	M6
HMW8	M8
HMW 10	M10
HMW 12	M12
HMW 16	M16
HMW 20	M20
HMW 24	M24

Wrench for Vlier long travel plungers, HTHL/HHL Series

Spec - Sheet



Part Number	For Thread Size
HLW 10	M10
HLW 12	M12
HLW 16	M16
HLW 22	M22
HLW 24	M24

VLIER VLIER VLIER VLIER VLIER VLIER VLIER VLIER VLIER VLIER VLIER

FEATURES

- Ease of installation and removal
- design specific by size
- Slotted plunger body for blind whole install
- T handle design for long travel high torque
- Standard screwdriver handle for standard
- T handle for long travel design

EXPERIENCE THE POWER OF VLIER



Every item in this catalog has been designed to fill a specific need of industry. Each has been engineered to reduce cost, increase productivity and perform dependably. Over the years, constant improvements have been made to better serve the requirements of our customers. Vlier Products are precision made, utilizing the finest materials for each particular application. You can depend on Vlier to do the Job.

VLIER VLIER VLIER VLIER VLIER VLIER VLIER VLIER VLIER VLIER VLIER VLIER

EXPERIENCE THE POWER OF VLIER



1943-2003



BARRY CONTROLS

VLIER VLIER VLIER VLIER VLIER VLIER VLIER VLIER VLIER VLIER VLIER VLIER

METRIC

Spring Loaded Device Catalog Supplement

**For more information or
To place an order, contact
Your Local Vlier Distributor,
Or Call Vlier at 1-800-821-1090
Or Fax Vlier at 1-800-821-2020**

WWW.VLIER.COM

THE INDUSTRY STANDARD for more than HALF A CENTURY

Call your Authorized VLIER dealer or contact us at 800/821-1090
or visit us on the web at www.vlier.com



1943-2003



BARRY CONTROLS

VLIER VLIER VLIER VLIER VLIER VLIER VLIER VLIER VLIER VLIER VLIER VLIER