



INTRODUCING THE **VLIER** SERRATED TOGGLE

- **SERRATED BOTTOM**
- **SELF LEVELING**
- **OFF-CENTER ADJUSTMENT**



VLIER VLIER VLIER VLIER VLIER VLIER VLIER VLIER VLIER VLIER VLIER VLIER

THE INDUSTRY STANDARD for more than HALF A CENTURY

Experience new gripping power from **VLIER** with our new Serrated Toggle pads. These new **VLIER** toggle pads solidly clamp parts with uneven and off angle surfaces, with the new strength of a serrated gripping pad. This design feature works even harder for you to eliminate clamp slippage. All are self-aligning and self-leveling, with the 10 degree angle of movement from the center. We offer a wide selection in steel or stainless steel materials, to fit whatever job you may be working on.

Working smarter and harder for YOU, **VLIER** has the right part for the job.

Call your Authorized VLIER dealer or contact us at 800/821-1090
or visit us on the web at www.vlier.com



1943-2003

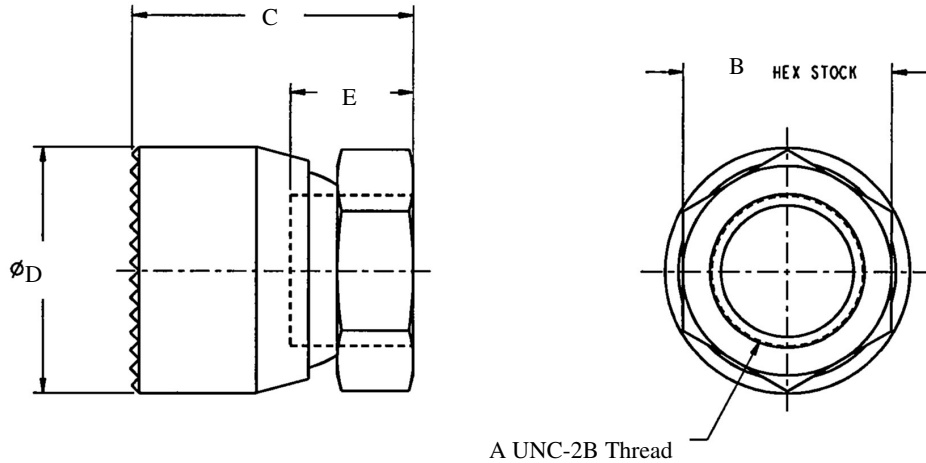


BARRY CONTROLS



SPRING LOCATING PINS

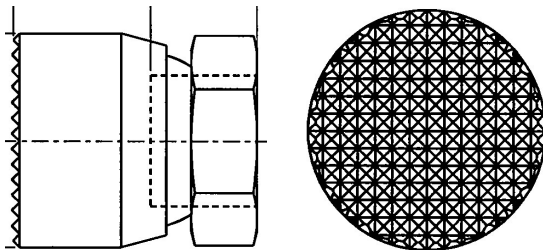
Spec - Sheet



PART NUMBER		Max. Load (lbs)		A	B	C	D	E
Steel Pads	Stainless	Steel Pads	Stainless					
PS300	SSPS300	3900	5000	1/4 - 20	1/2	0.625	0.625	5/16
PS302	SSPS302	5900	7600	5/16 - 18	9/16	0.750	0.688	3/8
PS304	SSPS304	6400	8250	3/8 - 16	5/8	0.813	0.750	3/8
PS306	SSPS306	7000	9000	1/2 - 13	3/4	0.938	0.875	7/16
PS308	SSPS308	10000	12900	5/8 - 11	7/8	1.000	1.000	7/16
PS310	SSPS310	13500	17400	3/4 - 10	1 1/16	1.344	1.250	5/8
PS312		18750		1 - 8	1 3/8	1.828	1.625	13/16

Pads available in zinc plated steel and stainless steel

VLIER VLIER VLIER VLIER VLIER VLIER VLIER VLIER VLIER VLIER VLIER



Each pad features our Serrated foot print to increase clamping power without increasing pressure.

EXPERIENCE THE POWER OF VLIER



1943-2003



BARRY CONTROLS